



Dry Cleanroom Wipes

- Over 20 years as an industry leading manufacturer of wipes
- Options for Class 1-100,000 Cleanrooms, Lab, & Industrial
- Four clean-cut edges to eliminate fiber contamination
- Materials include: Non-wovens, Polypropylene, Polyester, Cotton, and Cellulose
- Sterile and non-sterile options
- Custom and private label available



Product Name	Description	Sizes Available
Polyester, Sealed-Edges (ISO Class 3-4)		
Ultimate 60™ (ULT60-SIZE)	100% Polyester Knit Wipes, Sealed-Edges, Standard Weight	9" x 9", 12" x 12"
Ultimate 65™ (ULT65-99)	Double-Knit Polyester Wipes, Ultrasonically Sealed-Border	9" x 9"
Ultimate 70™ (ULT70-SIZE)	100% Polyester Knit Wipes, Sealed-Edges, Heavy Weight (140 GSM)	4" x 4", 9" x 9"
Ultimate 90™ (ULT90-99)	Quilted 2-Ply Polyester, Sealed-Edges (290 GSM) - <i>Ultra Heavy Weight!</i>	9" x 9"
QHT1 (QHT1-SIZE)	Quilted 2-Ply Polyester, Sealed-Edges (240 GSM)	9" x 9", 12" x 12"
Polyester (ISO Class 5)		
Vision 10™ (VS10-99)	100% Polyester Knit Wipes, Standard Weight - <i>Cost Effective Option!</i>	9" x 9"
Vision 20™ (VS20-SIZE)	100% Polyester Knit Wipes, Heavy Weight (140 GSM)	9" x 9", 12" x 12"
Vision 50™ (VS50-SIZE)	100% Polyester Knit Wipes, ESD/Anti-Static	9" x 9", 12" x 12"
Vision 10U™ (VS10-99UB5)	100% Polyester Knit Wipes, Standard Weight, Bulk-Unlaundered	9" x 9"
NT-203 (NT-203-SIZE)	Nonwoven 100% Polyester - <i>Excellent for Sensitive Surfaces!</i> 	9" x 9", 12" x 12"
Nonwoven Poly/Cellulose (ISO Class 5-6)		
Nova-Tech™ 1 (NT1-SIZE)	Nonwoven Poly/Cellulose - <i>Our most popular cleanroom wipe!</i> 	4" x 4", 6" x 6", 7" x 7", 9" x 9", 12" x 12", 18" x 18"
Nova-Tech™ 10 (NT10-SIZE)	Nonwoven Poly/Cellulose	9" x 9", 12" x 12"
Nova-Tech™ Blue (NTB-99)	Blue Nonwoven Poly/Cellulose - <i>Excellent for Color Coding</i>	9" x 9"
GRAB-EEZ™ Nova-Tech™ (GE-NT1-SIZE)	C-Folded Cleanroom Wipes Designed for the GRAB-EEZ 	9" x 9", 7" x 12" (for previous model)
GRAB-EEZ™ Dispenser (GE-DISP-SS)	Cleanroom Wipe Dispenser Designed to Eliminate Cross-Contamination and Wipe Waste	Dispenser Dimensions: 14.5"(H),9.5"(W),5.5"(L)
Nova-Tech 56™ (NT56-SIZE)	Nonwoven Poly/Cellulose, Lightweight - <i>Cost Effective!</i>	9" x 8", 9" x 9", 12" x 12", 18" x 18"
Nova Scrub™ (NS-SIZE)	Textured/Apertured Poly-Cellulose - <i>Ideal for Heavy Scrubbing</i> 	9" x 9", 12" x 12"
Select-Sat™ (SS-NT1-SIZE)	Dry Nonwoven Poly/Cellulose - <i>Ready for Custom Saturation</i> 	7" x 7", 7" x 12"
Cobalt Blue™ (NT1-SIZECEB)	Validated Sterile, Nonwoven Poly/Cellulose 	9" x 9", 12" x 12"
Polypropylene (ISO Class 5-6)		
NOVA-TECH P™ (NTP-SIZE)	Melt-blown Polypropylene Wipers - <i>Absorbs Oil and Other Chemicals</i> 	8" x 11", 11" x 11"
Composite (ISO Class 5-6)		
Synergy (SN-SIZE)	Polypropylene/Cellulose Composite - <i>Non-abrasive and Solvent Resistant</i>	8" x 8", 11" x 12"
Cotton (ISO Class 6)		
Nova-Cot™ (NC-SIZE)	100% Woven Cotton Twill  	4" x 4", 6" x 6", 9" x 9", 12" x 12", 17" x 17"
Foam (ISO Class 6)		
Sponge-Tech™ (SG-SIZE.100)	1/8" Thick 100 PPI Polyurethane Foam	6" x 9", 9" x 9", 12" x 12"
Lab Wipes		
FG-1	Friendly Green® "The Little One" 100% Recyclable Cellulose Task Wipe  	4.5" x 8.3"
TECHWIPE-XL-1	TechWipe-XL Delicate Task Wipe 100% Recyclable Cellulose  	16.5" x 15"

Presaturated Cleanroom Wipes

- Reduce solvent waste and the use of squirt bottles and dipping cans
- Exact percentage of IPA every application, evenly distributed
- Fewer VOCs (Volatile Organic Compounds)
- Safer to use, ship, and store than flammable liquids
- Convenience: No pouring, spraying, filtering, or diluting



Product ID	Description	Size	Packaging
Poly-Cellulose (ISO Class 5-8)			
FS-NT1-77	FREE-SAT™ (70% IPA/30% DI Water) Nonwoven Poly-Cellulose	7" x 7"	100 Wipes/Tub, 12 Tubs/Case
FS-NT1-77.99	FREE-SAT™ (99% IPA/1% DI Water) Nonwoven Poly-Cellulose	7" x 7"	100 Wipes/Tub, 12 Tubs/Case
FS-NT1-77.9010	FREE-SAT™ (90% IPA/10% DI Water) Nonwoven Poly-Cellulose	7" x 7"	100 Wipes/Tub, 12 Tubs/Case
FS-NT1-77.10	FREE-SAT™ (10% IPA/90% DI Water) Nonwoven Poly-Cellulose	7" x 7"	100 Wipes/Tub, 12 Tubs/Case
FS-NT1-99	FREE-SAT™ (70% IPA/30% DI Water) Nonwoven Poly-Cellulose	9" x 9"	75 Wipes/Bag, 12 Bags/Case
FS-NT1-712	FREE-SAT™ (70% IPA/30% DI Water) Nonwoven Poly-Cellulose	7" x 12"	75 Wipes/Tub, 12 Tubs/Case
FS-NT1-712.50.18	FREE-SAT™ (50% IPA/50% DI Water) Nonwoven Poly-Cellulose	7" x 12"	75 Wipes/Tub, 12 Tubs/Case
SS-NT1-77	Select-Sat™ Dry Nonwoven Cleanroom Wipes - Ready for Custom Saturation	7" x 7"	100 Wipes/Tub, 12 Tubs/Case
FS-NT1-912.35CB	Cobalt Blue™ Sterile Wipes (70% IPA/30% DI Water) Nonwoven Poly-Cellulose	7" x 12"	35 Wipes/Bag, 20 Bags/Case
Polypropylene (ISO Class 5-8)			
FS-NTP-711	FREE-SAT™ (70% IPA/30% DI Water) Polypropylene	7" x 11"	120 Wipes/Bag, 12 Bags/Case
FS-NTP-911	FREE-SAT™ (70% IPA/30% DI Water) Polypropylene	9" x 11"	50 Wipes/Bag, 24 Bags/Case
FS-NTP-1711.85	FREE-SAT™ (85% IPA/15% DI Water) Polypropylene	17" x 11"	50 Wipes/Bags, 20 Bags/Case
FS-NTP-911.35CB	Cobalt Blue™ Sterile Wipes (70% IPA/30% DI Water) Polypropylene	9" x 11"	35 Wipes/Bag, 20 Bags/Case
Polyester (ISO Class 5-8)			
FS-VS20-44.400	FREE-SAT™ (70% IPA/30% DI Water) 100% Polyester	4" x 4"	400 Wipes/Bag, 2 Bags/Case
FS-NT203-99.20CB	Cobalt Blue™ Sterile Wipes (70% IPA/30% DI Water) Nonwoven Polyester	9" x 9"	40 Wipes/Bag, 20 Bags/Case
Polyester, Sealed-Edges (ISO Class 3-4)			
FS-ULT70-99.30	FREE-SAT™ (70% IPA/30% DI Water) 100% Polyester, Sealed-Edges	9" x 9"	30 Wipes/Tub, 12 Tubs/Case
FS-ULT70-99.40	FREE-SAT™ (70% IPA/30% DI Water) 100% Polyester, Sealed-Edges	9" x 9"	40 Wipes/Tub, 12 Tubs/Case
FS-ULT70-99.99	FREE-SAT™ (99% IPA/1% DI Water) 100% Polyester, Sealed-Edges	9" x 9"	30 Wipes/Tub, 12 Tubs/Case
FS-ULT70-99CB	Cobalt Blue™ Sterile Wipes (70% IPA/30% DI Water) 100% Polyester, Sealed-Edges	9" x 9"	30 Wipes/Bags, 10 Bags/Case
Canister Wipes (ISO Class 6-8)			
FS-NT1-69ECO	FREE-SAT® ECO 70% IPA / 30% DI Water Presaturated Wipes, Poly-cellulose	6" x 9"	100 Wipes/Roll, 3 Canisters/Case, 18 Roll Refills/Case
FS-NT1-69.9C	FREE-SAT® 70% IPA / 30% DI Water Presaturated Wipes, Poly-cellulose	6" x 9"	100 Wipes/Unit, 9 Units/Case
FS-NT1-69.96	FREE-SAT® 96% IPA / 4% DI Water Presaturated Wipes, Poly-cellulose	6" x 9"	100 Wipes/Unit, 9 Units/Case

Cobalt Blue® Sterile

- Validated to SAL (Sterility Assurance Level) of 10⁻⁶ in accordance with standards and recommended practices of the ANSI/AAMI/ISO 11137:2006 guidelines
- Cobalt-60 Gamma Irradiated
- Meets and exceeds <USP>797 and <USP>800 requirements for critical contamination control
- Each package is identified with a lot number for traceability
- Each case of material includes a Certificate of Sterility
- Available in Dry and Presaturated
- Materials include: Poly-cellulose, Polyester and Polypropylene

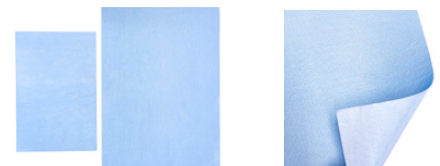


Sterile Presaturated Wipes

Product Name	Description	Size	Packaging
Poly-Cellulose (ISO Class 5)			
FS-NT1-912.35CB	Cobalt Blue™ Sterile Wipes (70% IPA/30% DI Water) Nonwoven Poly-Cellulose	9"x12"	35 Wipes/Bag, 20 Bags/Case
Polypropylene (ISO Class 5)			
FS-NTP-911.35CB	Cobalt Blue™ Sterile Wipes (70% IPA/30% DI Water) Polypropylene	9"x11"	35 Wipes/Bag, 20 Bags/Case
Polyester (ISO Class 5)			
FS-NT203-99.20CB	Cobalt Blue™ Sterile Wipes (70% IPA/30% DI Water) Nonwoven Polyester	9"x9"	40 Wipes/Bag, 20 Bags/Case
Polyester, Sealed-Edges (ISO Class 3-4)			
FS-ULT70-99CB	Cobalt Blue™ Sterile Wipes (70% IPA/30% DI Water) 100% Polyester, Sealed-Edges	9"x9"	30 Wipes/Bags, 10 Bags/Case

Sterile Dry Wipes

Product Name	Description	Size	Packaging
Poly-Cellulose (ISO Class 5)			
NT1-99CB	Cobalt Blue™ Sterile Nonwoven Poly/Cellulose	9" x 9"	25 Wipes/Bag, 6 Bags/Master Bag, 10 Master Bags/Case
NT1-1212CB	Cobalt Blue™ Sterile Nonwoven Poly/Cellulose	12" x 12"	20 Wipes/Bag, 6 Bags/Master Bag, 7 Master Bags/Case



Sterile Chemo Mats

Product Name	Description	Size	Packaging
CBCM-1611.15	Gamma Irradiated, Lint Free, Highly Absorbent, Non-Porous Backing	16" x 11"	15 Mats/Bag, 10 Bags/Case
CBCM-2216.10	Gamma Irradiated, Lint Free, Highly Absorbent, Non-Porous Backing	22" x 16"	10 Mats/Bag, 20 Bags/Case

GRAB-EEZ®

Cleanroom Wipe Dispenser



A solution to wipe waste and cross-contamination in the cleanroom.

The GRAB-EEZ® Cleanroom Wipe Dispenser, *now made from durable stainless steel*, is your cost saving solution to wasteful wipe use. The easy to use GRAB-EEZ® is wall or table top mountable and is designed to eliminate wasteful wipe use, cross contamination, and counter top clutter.

Why stainless steel?

Durability & Longevity: Stainless steel withstands a variety of cleaning solvents without degrading or breaking down. Withstands heavy wear and tear - stands the test of time.

Corrosion Resistance: Stainless steel has excellent corrosion resistance properties that make it resistant to rust, staining, and contamination. This helps to maintain the cleanliness of the environment and avoid contamination of sensitive products.

Cleanliness: Easier to clean and disinfect, stainless steel is smooth and non-porous, making it easier to maintain a superior level of cleanliness.

Environmentally Friendly: Stainless steel is a sustainable and eco-friendly material as it is 100% recyclable and can be reused without compromising its properties.

Features & Benefits

- New: Stainless steel construction
- 9" x 9" C-folded wipes
- Redesigned cover makes loading wipes easier!
- Optional plastic shield protects wipes inside!
- Eliminates waste – No more loss of wipes!
- Approximately 3X less unnecessary usage = 3X less expensive!
- No cross-contamination
- User friendly
- Easier to use with gloved hands
- Conforms to good housekeeping practices
- Counter top or wall mountable
- Protected from environment
- Unique double c-folded design
- Extremely low in particles & low in chemical extractables
- Up to ISO Class 5 (Class 100) cleanroom compatibility



Packaging

Product Name	Description	Size	Packaging
GE-DISP-SS	Grab-EEZ® Wipe Dispenser, Stainless Steel	14.5" x 9.75" x 5.75"	Sold individually
GE-NT1-99	Grab-EEZ® Wipe Refills, Nonwoven Poly-Cellulose Cleanroom Wipes	9" x 9"	250 Wipes/Bag, 12 Bags/Case

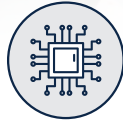
Global Manufacturer of High-Tech Cleaning Products

We believe in manufacturing innovative, cutting-edge products that will lower your costs. Our goal is to provide you with products that perform better and are easier to use.

We manufacture virtually any type of consumable for a variety of industries including:



Cleanroom & Lab



Electronics Assembly



Industrial



Food Processing



Pharmaceutical



Facility Maintenance



Aerospace & Auto



Dry Cleanroom Wipes

- Nonwoven, Poly-cellulose, Polyester, Polypropylene, Cotton, and Foam
- Sterile and non-sterile options
- ISO Class 3-7
- Brands include NOVA-TECH®, VISION, ULTIMATE, Cobalt Blue®



Presaturated Cleanroom Wipes

- Various materials and saturation Levels
- Sterile and non-sterile options
- Convenient packaging for ease of dispensing
- Brands include: FREE-SAT®, Cobalt Blue®



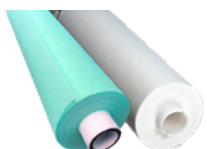
Canister Wipes

- Wipes for electronics assembly, industrial, lab, and cleanroom applications
- Brands include SuperSaturated SmartWipes®, FREE-SAT®



Industrial Wipes

- Wipes for General Purpose & Equipment Wiping, Surface Prep
- Ideal for Manufacturing, Automotive, Aerospace, Printing, Maintenance, and more
- Center-Pull, DRC, Hydroknit, and Cellulose



Stencil Wiping Rolls

- SmartRolls® and Green Monster® Stencil Wiping Rolls
- High-Tech Conversions & JNJ Industries combine 60+ years of innovation, development, and partnerships



Tacky Traxx®

- Traxx Traxx® Floor Mats & Tacky Rollers
- PVC & Aluminum Frames Available
- Custom Logo Mats Available



Protective Apparel

- Disposable Gloves
- Beard Covers, Facemasks, Bouffant Caps
- Boot/Shoe Covers
- Coveralls, Aprons, Lab Coats, Sleeves, and Hoods



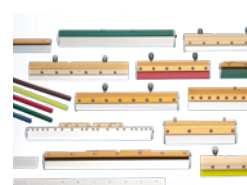
Equipment & Supplies

- GRAB EEZ™ ESD Safe Cleanroom Wipe Dispenser - Eliminates wasteful wipe usage and cross-contamination
- Cleanroom Documentation
- Cleanroom Mops



Chemicals & Cleaners

- GlobalTech® Chemical Division delivers a complete line of innovative formulations used in electronic assembly manufacturing and precision cleaning applications



Squeegee Blades & Holders

- Developed using decades of research and manufacturing experience to produce the most comprehensive line of OEM compatible squeegee products. Our expert craftsmanship ensures superior quality in both standard and custom squeegees options.

Private Label Options Available | Custom Converting Capabilities | Drop Shipping Services Available